



The Games of the XVIIIth Olympiad, Tokyo 1964

from October 10th (Saturday) to 25th (Sunday)

National Gymnasium

New Athletic Complex for 1964

Construction on a major new sports center at Olympic Village in Tokyo has started in January. The complex will be called the National Gymnasium and it will be built for the Olympic Games by the Japanese Government at a cost of 2,300 million yen (Approx. 6 million U.S. dollars). Work on the project will be completed by August 1964.

Consisting of a main arena and an annex building, the facility will be erected on a 100,000 square meter site at the south-east corner of the Olympic Village.

Internationally acclaimed architect Kenzo Tange completed basic design work for the buildings. Detailed work drawings for all internal construction will be finished in December of this year.

Olympic swimming and diving events and judo matches will be held in the main arena, while basketball contests will take place in the gymnasium annex.

The roof is the outstanding design feature of the main building. It will be supported by steel cables stretched between two giant pillars.

The suspension roof has been conceived as an economical means of covering a large area that will accommodate numerous spectators.

The lighting equipment will be sufficient to permit colour filming and television broadcasting. Special consideration is being given to the problem of vapour so that it will not interfere with clear sound reproduction.

The structure will also have automatic ventilation, with a combined warm air heating and air conditioning system.

The circular annex will be equally modern in design with the roof braced by a single massive support. When completed, the annex will seat 5,000 and will resemble a huge univalve shell lying face-downward on the sand. Its unique interior will undoubtedly

impress visitors who will gather here for the Olympic basketball competitions.

In exterior design, the two buildings will complement each other to form a well-balanced composition. They will be erected on a greenery-covered incline against a background of deciduous and evergreen trees. The functional modern designs created by Tange will set high architectural standards for future sport centers.

Inside the main building the 1,500 square meters of floor space will accommodate: a 50 meter-9 lane swimming pool, a diving pool with a 10 meter high board, and seats for 15,000 spectators. The pools are so designed that they can be easily and quickly covered to provide floor space for the judo matches which are scheduled to be held there.

Underground rooms and an underpass for athletes and officials will be constructed in the area between the main building and the annex. These will be so placed that easy and rapid access to either building will be possible. Athletes will be able to rest between events in the well furnished rooms.

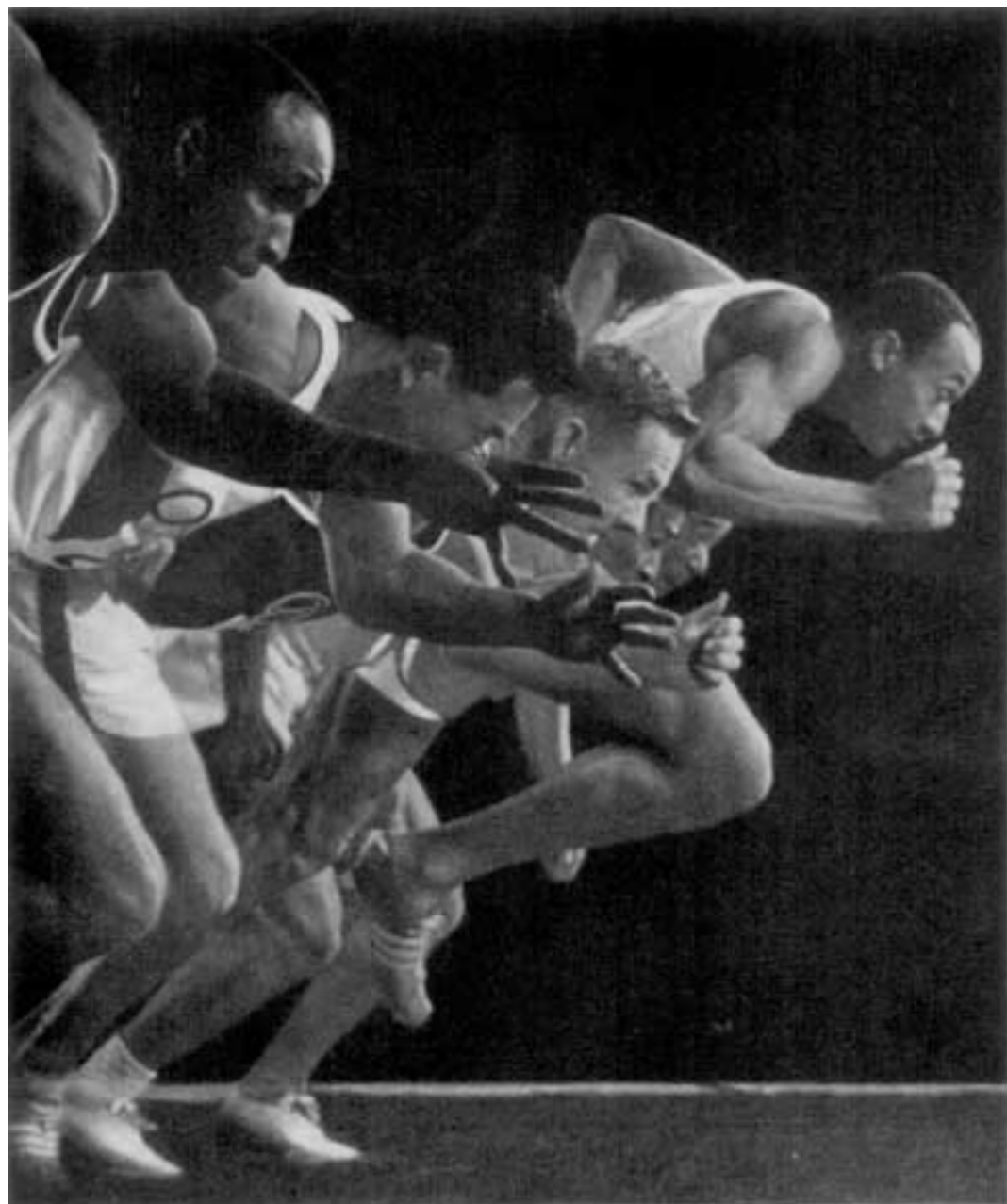
A great deal of planning has gone into the placement of the buildings and the location of exits.


Pedestrian traffic-flow patterns were scientifically calculated during preliminary design studies to assure rapid movement of spectators without sacrificing architectural appearance.

Four passageways leading to the central courtyard effectively divide pedestrian traffic into two main streams.

Since the structures will be erected on the edge of elevated land commanding a fine view of a heavily populated section of the city, it will face major highways laid out in spider-web fashion. This will make easy access possible from both the central and suburban areas of the city.

Public conveyance is also convenient. The Harajiku Station of the Japan National Railways' Yamate Line is quite near while Shibuya, the terminal station for various suburban railway services, is only a few minutes' walk.



TOKYO  **1964**

	1	2	3	4	5	6	7	8	9	10	11	12	13	14	15	
Oct.	Sat. Sam.	Sun. Dim.	Mon. Lun.	Tue. Mar.	Wed. Mer.	Thu. Jeu.	Fri. Ven.	Sat. Sam.	Sun. Dim.	Mon. Lun.	Tue. Mar.	Wed. Mer.	Thu. Jeu.	Fri. Ven.	Sat. Sam.	
	10	11	12	13	14	15	16	17	18	19	20	21	22	23	24	
				 Athletics Athlétisme												
		 Rowing Aviron														
		 Basket-Ball Basket Ball														
		 Boxing Boxe														
												 Canoeing Canotage				
					 Cycling Cyclisme											
				 Fencing Escrime												
	 Football Football															
									 Gymnastics Gymnastique							
		 Weight Lifting Haltephénie														
		 Hockey Hockey sur Gazon														
											 Judo Judo					
	 Wrestling Lutte															
	 Swimming & Diving Natation et Plongeon															
	 Modern Pentathlon Pentathlon Moderne															
							 Equestrian Sports Sport Equestre									
						 Shooting Tir										
	 Volley-Ball Volley-Ball															
	 Water-polo Water-polo															
	 Yachting Yachting															

Opening Ceremony La Cérémonie d'Ouverture

Closing Ceremony La Cérémonie de Clôture

The New Olympic Tokyo Poster issued

That second Olympic poster, which has been called a masterpiece, has been issued a few months ago and has obtained a considerable success in the world. It is the work of the well known graphic designer Yusaku Kamekura, assisted in his work by photo director

Jo Murakoshi and photographer Osamu Hayasaki.

The action picture chosen for the poster was the last of many attempts by Kamekura to get just the right photographic composition. More than 60 pictures were taken on location at the National Stadium in order to get the perfect picture. It represents six athletes of different races in a heated starting dash in deepening twilight. Photographer Hayasaki said that the assignment was the most challenging he had never encountered.