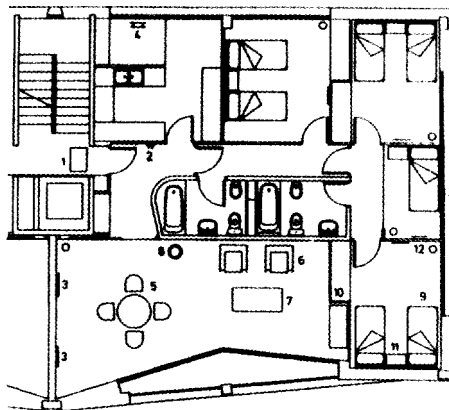


IN BARCELONA TOO A VILLAGE WITH THE BEST SERVICES

The Barcelona'92 Olympic Village will be the first in history to be beside the sea side. The site where thousands of athletes participating in the Olympic Games will be accommodated will have a surface area of 51 hectares with 264,000 square metres of buildings, this will be sufficient to guarantee accommodation in the Village for the main competitors and all kinds of facilities will be available. In addition to resting, the athletes will have various types of entertainment and fun in a privileged location. Also, for the first time in history, the accommodation in the Village will be free of charge, with a maximum stay of 18 days.

By Eulogio Perez

Flats that are adapted to the needs of the athletes at the Games.



1 ESTERILLA, 2 PERCHERO, 3 POSTER, 4 TENDEDERO, 5 MESA Y SILLAS, 6 SILLÓN, 7 MESILLA BAJA, 8 TIESTO CON PLANTAS, 9 CAMA, 10 ARMARIO CON PERCHAS, 11 MESILLA DE NOCHE (CAJON CON LLAVE), 12 PAPELERA.

The residential area of the Olympic Village will be divided into buildings of two, four and seven floors high. The ground floors, which will occupy an area of 60,000 square metres, will be designated for communal use and basic services, such as for medical attention, offices and meeting rooms for business, sports teams and for pleasure. The athletes will have training fields at their disposal, a cultural centre, a promenade by the sea and a private beach.

With regard to the services for the athletes, one of the aspects given a high priority is medical services. A polyclinic located inside the Olympic Village will provide specialized assistance such as internal medicine, traumatology, odontology and ophthalmology. A central physiotherapy program will also be initiated as part of the medical treatment for rehabilitation and it will take care of the office for pharmaceutical supplies. Similarly, the polyclinic will provide emergency services 24 hours a day.

The athletes will have various locations at their disposal where they can eat. The main restaurant will have seating capacity for 3,500 people and there will be an additional four restaurants of a smaller size distributed on the wharf of the sports harbour. At other points of the Village the athletes will also be able to make use of the complementary facilities for meals such as coffee shops and bars.

When it is time to compete, the athlete will use the transportation services once again, travelling along the Olympic lanes provided in order to avoid obstructions and possible delays. After having competed, the athlete will be transported back by the same route to the comfort of the Village.

E.P.

This article is reprinted from *Barcelona Olimpica* No. 27.