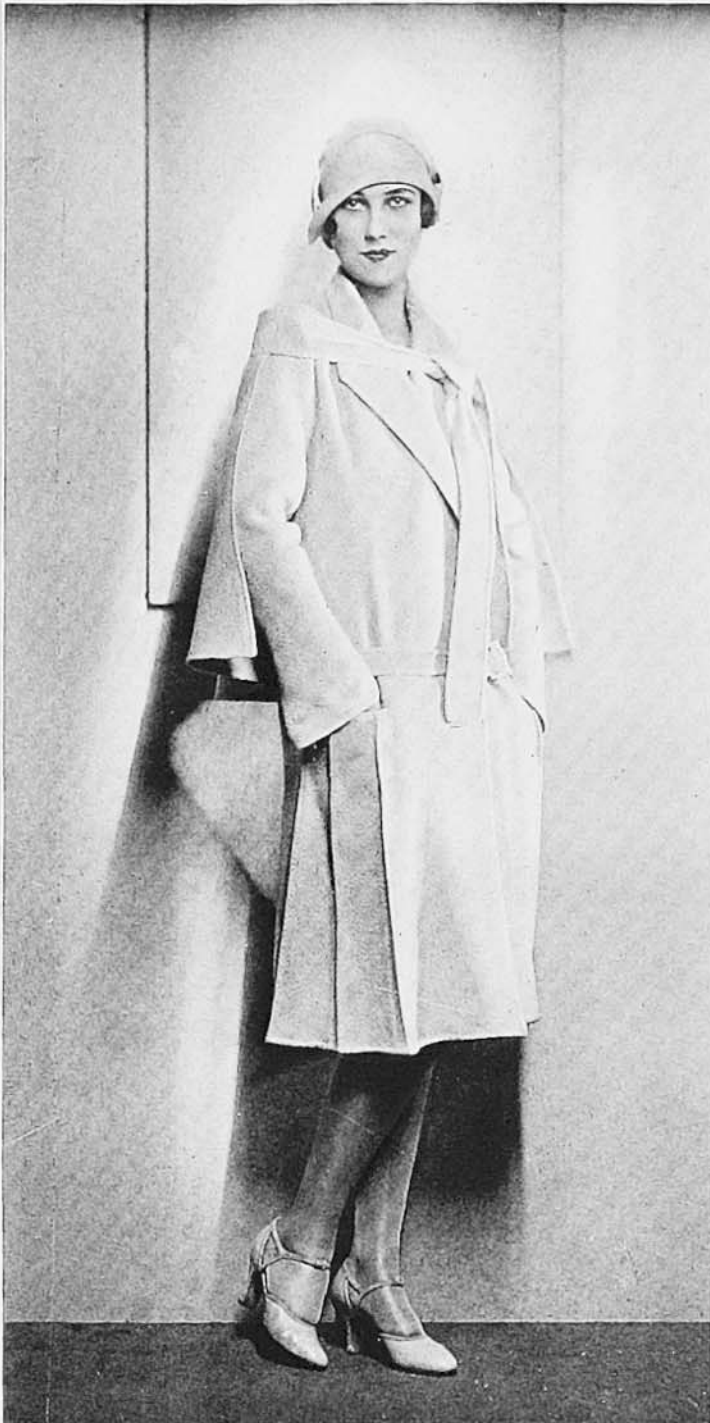


# Suggestions for Country Club Wear



A white novelty tweed is offered by Gunther for country club wear. The circular cape is detachable as is the belt which fastens with a chanel buckle. Plaits starting from the pockets give a slight flare. Gunther also anticipates the return of the white fox (right) to popularity



Angora tweed, in a soft honey beige color, is a smart new idea for the spring sport coat, from Saks-Fifth Avenue

